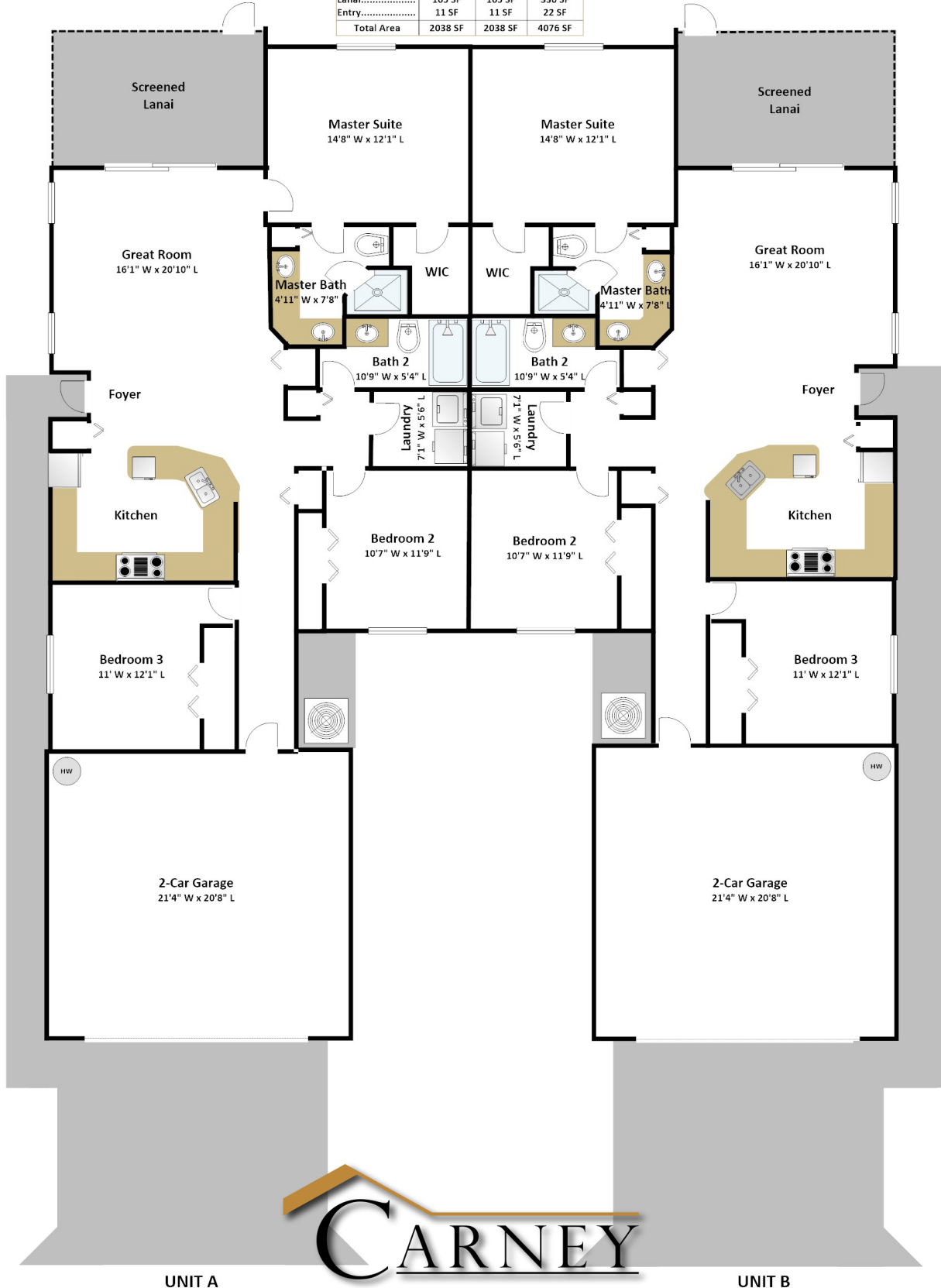


# Duplex 2-Car Garage

Building Area			
	Unit A	Unit B	Total
Living Area.....	1420 SF	1420 SF	2840 SF
Garage.....	442 SF	442 SF	884 SF
Lanai.....	165 SF	165 SF	330 SF
Entry.....	11 SF	11 SF	22 SF
<b>Total Area</b>	<b>2038 SF</b>	<b>2038 SF</b>	<b>4076 SF</b>



1715 Cape Coral Pkwy #20 | Cape Coral, FL 33914 | [www.carneyqualityconstruction.com](http://www.carneyqualityconstruction.com)

Drawing is not to scale. This rendering is for flyer purposes only, Pool is an option.

© Copyright 2015 Carney Quality Construction CBC 057911